

radiance ®



AO
AMERICAN
ORTHODONTICS



TECHNICALLY BEAUTIFUL™

AESTHETIC BRILLIANCE

Radiance Plus®, rated the clearest twin ceramic bracket available, is the result of progressive technology and the aesthetic beauty of sapphire that is unrivaled in any other monocrystalline bracket.¹

CLINICAL EXCELLENCE

An excellent choice for patients of any age, Radiance Plus protects your patient's investment and your time by ensuring compliance and predictable treatment outcomes even in the most complex cases. This worry-free performance allows your patients to focus on their beautiful new smile and not on the process.

PROVEN DURABILITY

Radiance Plus conveys strength in both body and base.

A proprietary heat polishing process helps smooth away micro voids or flaws, the patented Quad Matte® base delivers a remarkably strong bond, and thicker tie wings mean much less chance of bracket failure.

¹Lopes Filho, Hibernon, et al., 2012. Influence of optical properties of esthetic brackets (color, translucence, and fluorescence) on visual perception. American Journal of Orthodontics & Dentofacial Orthopedics. April 2012. 141(4): 460-467.

radiance 

SMILE CURVE CONTROL

The performance of Radiance Plus delivers clinical results focused on facial harmony. The brackets allow greater support and control of teeth to deliver aesthetic treatment based on smile curve aesthetic modalities, unlike other aesthetic options that are limited, resulting in a denture-like appearance.



BRILLIANCE



Second only to the diamond as the hardest substance in nature, the pure sapphire composition of Radiance is a wise choice due to its clarity and performance. No other ceramic systems can rival the aesthetics of Radiance Plus. The American Journal of Orthodontics and Dentofacial Orthopedics rated Radiance Plus as the most translucent of all monocrystalline brackets tested.

A honed and heat polished single pure sapphire crystal results in a strong and translucent bracket that is nearly invisible on the teeth, regardless of tooth shade. Radiance Plus is also resistant to stains, ensuring the brilliant appearance will last throughout treatment.

The low profile of Radiance Plus not only enhances its beauty but also provides excellent patient comfort, accommodating even the most active lifestyles. It is the combination of aesthetics and performance that you have come to expect and why you place your trust with American Orthodontics.

CLINICAL EXCELLENCE



ROTATIONAL CONTROL

Radiance Plus is engineered with optimum mesial-distal width on the maxillary centrals and cuspids to deliver industry leading rotational control. This greater anterior control allows you to deliver accurate results without sacrificing aesthetics.



PROVEN TIE-ABILITY

The true twin bracket design of Radiance Plus offers all tie configuration options associated with traditional twin brackets. An enlarged tie wing undercut also makes for much easier placement of elastics, ligatures and chain.



PRECISE BRACKET PLACEMENT

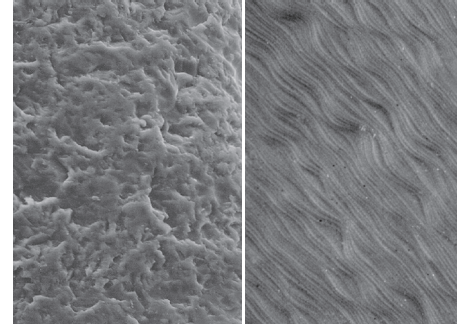
Non-latex elastomeric Visual Placement Aids (VPAs) provide simple, accurate, and consistent bracket placement without the staining risk associated with other color coding systems. Each VPA is color coded to its specific tooth so bracket placement is obvious. After bonding, VPAs separate easily from the slot with pliers and leave no ink for the patient to brush away.



PROVEN DURABILITY

SOLID CORE STRUCTURE

A heat treated, monocrystalline formation gives Radiance Plus a solid core structure, as opposed to the strand structure found in polycrystalline brackets. A proprietary heat polishing process creates just enough energy to smooth away any micro voids or flaws that could compromise the bracket's integrity. This results in a bracket that resists torque fracture more than that of polycrystalline brackets.



Before heat polishing After heat polishing

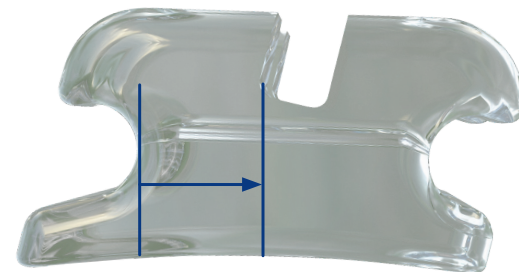
QUAD MATTE® BASE

A patented Quad Matte® base gives Radiance Plus its amazing bond strength. This technology delivers a strong bond in the center of the bracket and a smooth perimeter to make the debonding process predictable and simple.



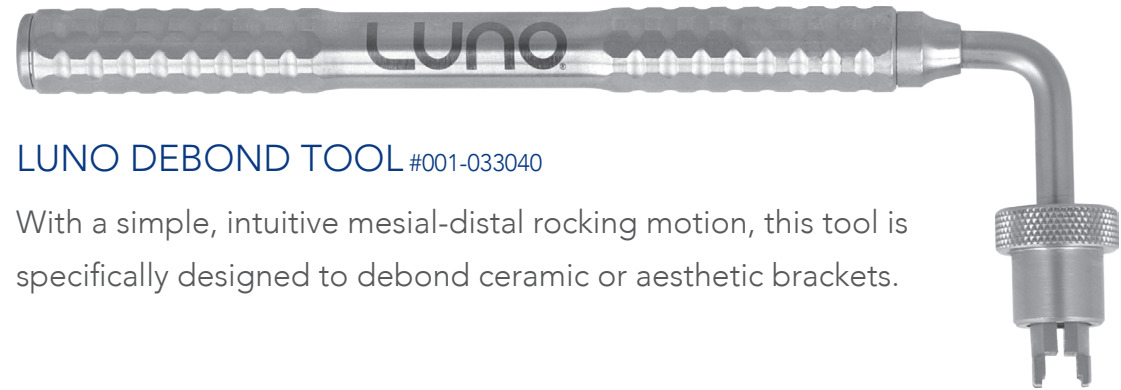
DURABLE TIE WINGS

The increased tie wing thickness on each Radiance Plus bracket enhances its solid body and the smooth radius on the base of each wing significantly reduces fracture risk. The design of the Radiance Plus tie wings also helps prevent torque loss during treatment.



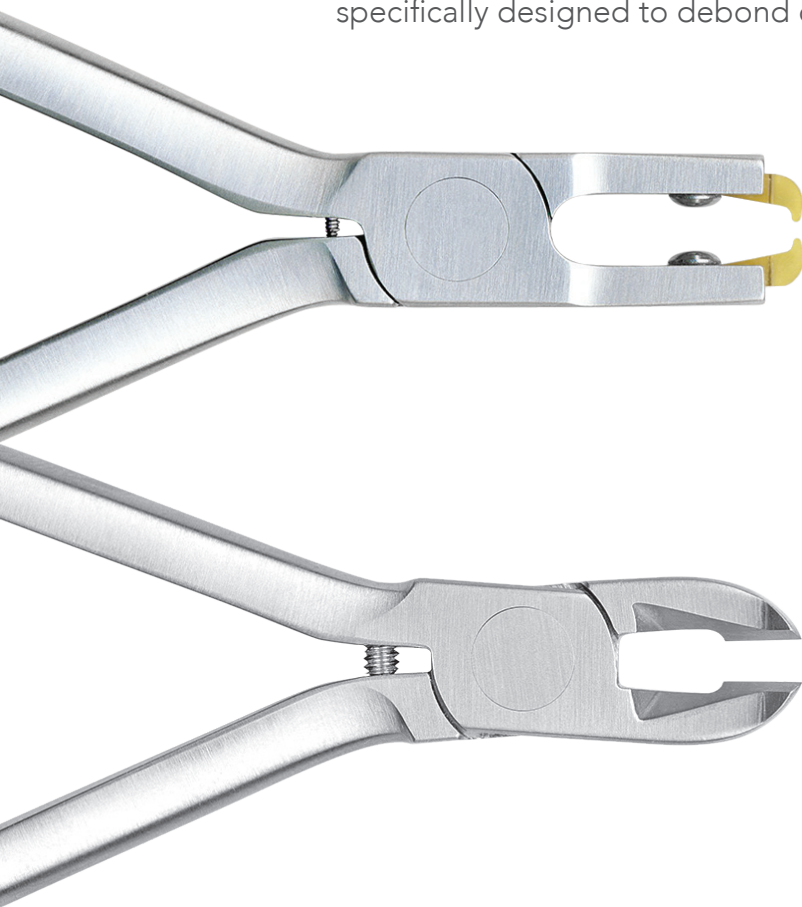
DEPENDABLE DEBONDING

Debonding Radiance Plus is simple and predictable thanks to specially designed ceramic bracket debonding instruments.



LUNO DEBOND TOOL #001-033040

With a simple, intuitive mesial-distal rocking motion, this tool is specifically designed to debond ceramic or aesthetic brackets.



RADIANCE PLUS DEBONDING PLIERS

#001-017405

These pliers are designed to debond by placing the opposing tips of the pliers occlusal/gingival under the tie wings while applying constant pressure to the handles.

#001-025385 Replacement tips are easily replaced and should be disinfected prior to use.

CERAMIC BRACKET DEBONDING PLIERS

(Sushi pliers) #001-017403

The blades of these “sushi” pliers are parallel when placed along the mesial and distal sides of the bracket. Only the upper surfaces of the tips are sharpened, focusing the debonding force at the bracket/enamel interface.

TECHNIQUES

MAXILLARY

	Central		Lateral		Cuspid			1st Bicuspid			2nd Bicuspid		
	Torq.	Ang.	Torq.	Ang.	Torq.	Ang.	Rot.	Torq.	Ang.	Rot.	Torq.	Ang.	Rot.
McLaughlin, Bennett, Trevisi	+17	+4	+10	+8	-7	+8	0	-7	0	0	-7	0	0
	+17	+4	+10	+8	-0	+8	0	-7	0	0	-7	0	0
Roth Compatible	+12	+5	+8	+9	-2	+10	4	-7	0	2	-7	0	2

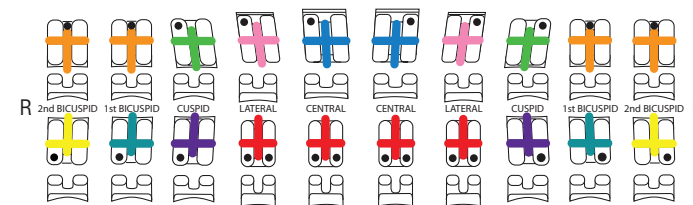
MANDIBULAR

	Central		Lateral		Cuspid			1st Bicuspid			2nd Bicuspid		
	Torq.	Ang.	Torq.	Ang.	Torq.	Ang.	Rot.	Torq.	Ang.	Rot.	Torq.	Ang.	Rot.
McLaughlin, Bennett, Trevisi	-6	0	-6	0	-6	+3	0	-12	+2	0	-17	+2	0
	-6	0	-6	0	0	+3	0	-12	+2	0	-17	+2	0
Roth Compatible	0	0	0	0	-11	+7	2	-17	0	4	-22	0	4

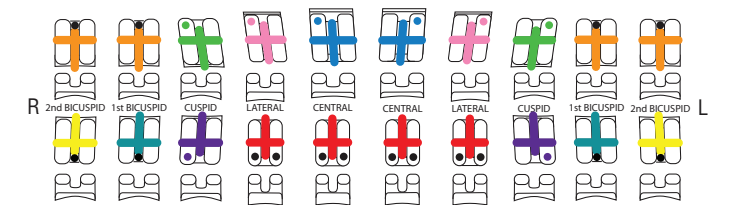
BRACKET COLOR IDENTIFICATION

Visual Placement Aids (VPAs) are color coded to each specific tooth.

A MCLAUGHLIN, BENNETT, TREVISI* SYSTEM



A ROTH* SYSTEM



*The American Orthodontics version of the Roth System is not claimed to be a duplication of any other, nor does American Orthodontics imply that it is endorsed in any way by Dr. Roth.

*The American Orthodontics version of the McLaughlin, Bennett, Trevisi System is not claimed to be a duplication of any other, nor does American Orthodontics imply that it is endorsed in any way by Drs. McLaughlin, Bennett, or Trevisi.

Visit www.americanortho.com for more RadiancePlus marketing assets:

Patient Brochures, Posters, Typodonts, Banner Graphics, Canvas

Digital Assets available on the Asset Library



3524 Washington Avenue
Sheboygan, Wisconsin, 53081 USA

Phone: +1 920 457 5051
Email: cs@americanortho.com
Web: americanortho.com



©2021 American Orthodontics Corporation
All Rights Reserved

FOLLOW US ON

